

Working Group on Bycatch of Protected Species (WGBYC)



ICES

International Council for
the Exploration of the Sea

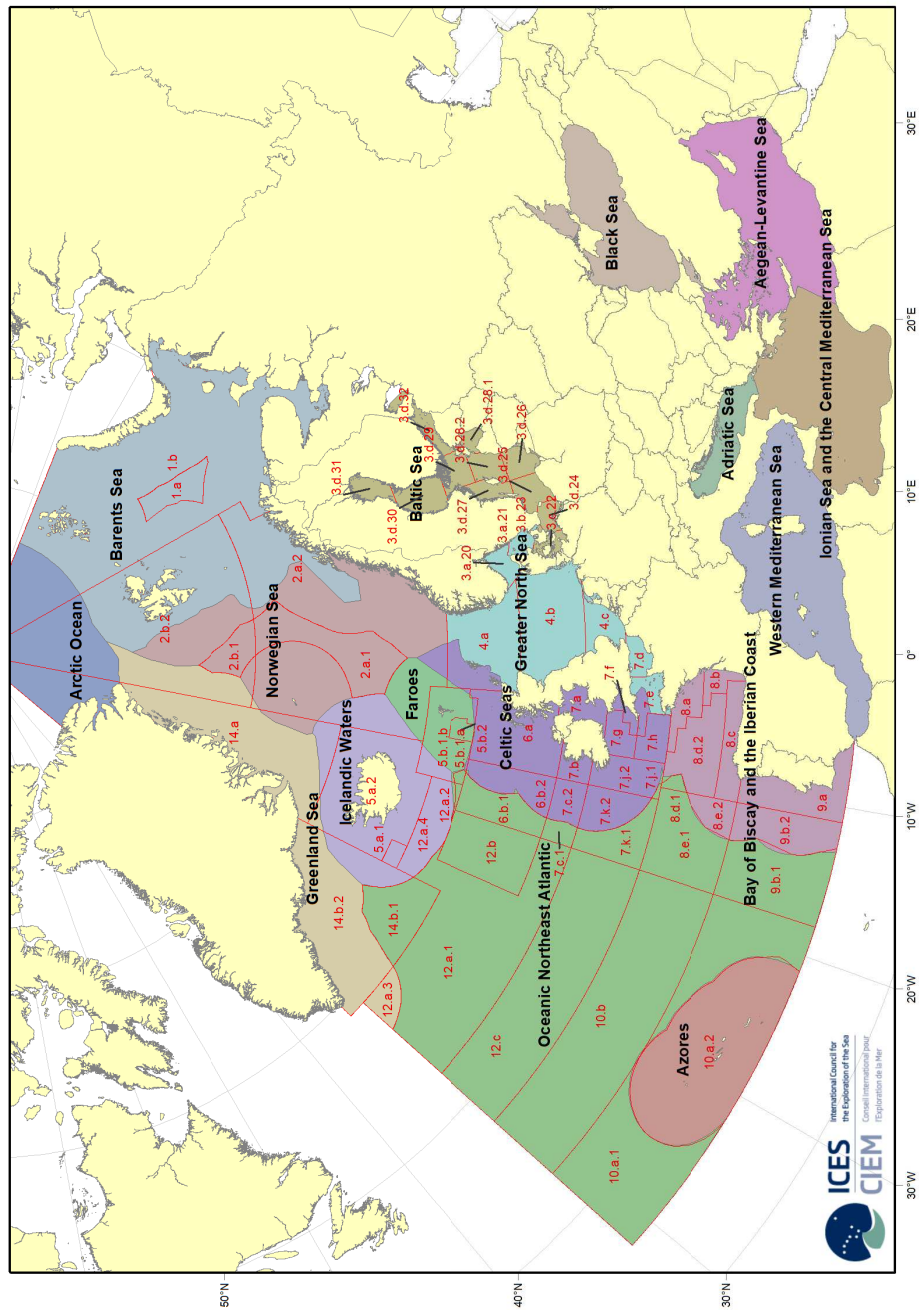
CIEM

Conseil International pour
l'Exploration de la Mer

International Council for the Exploration of the Sea

- Organisation intergouvernementale en science marine
- Réseau d'organismes de recherche/expertise (700 instituts, 5000 scientifiques, 20 pays membres)
- Objectif: Partager connaissances scientifiques des écosystèmes marins, et l'utiliser pour générer des conseils de gestion, de conservation et de durabilité.

ICES Ecoregions including ICES Statistical Areas, ices.dk, Dec 2017



WGBYC

- Collecte et évaluation du monitoring des captures accidentelles d'espèces protégées (mammifères marins, oiseaux, tortues et poissons rares)
- Évalue les actions des EM sous le règlement EU 812/2004
 - monitoring captures accidentelles
 - mitigation

Termes de Référence

- Review and summarize annual national reports submitted to the European Commission under Regulation 812/2004 and other published documents and collate bycatch estimates of protected species (birds, mammals, reptiles, and fish) in EU waters (ToR A)
- Collate and review information from National Regulation 812/2004 reports and elsewhere relating to the implementation of bycatch mitigation measures and ongoing bycatch mitigation trials, compile recent results and coordinate further work on protected species bycatch mitigation (ToR B)
- Evaluate the range (min/max) impacts of bycatch on protected species where possible by assessment unit, furthering the bycatch risk approach to assess likely conservation level threats and prioritize areas where additional monitoring is needed (ToR C)
- Continue to develop, improve and coordinate with other ICES WGs on methods for bycatch monitoring, research and assessment within the context of European legislation (e.g. MSFD) and regional conventions (e.g. OSPAR) (intersessional) (ToR D)

WGBYC

- Evaluation année n-2; Atlantique
- Appel à données effort + captures accidentelles espèces protégées
- Agrégées par métier et écorégion
- 2016: 155 oiseaux reportés, 17 espèces

ECOREGION	TAXA	ICES SUBAREA	MÉTIER3	SPECIES	TOTAL OBSERVED EFFORT (DAYS AT-SEA)	FISHING EFFORT (DAYS AT-SEA)	TOTAL NO. INCIDENTS	TOTAL NO OF SPECIMENS *INCIDENT REPORTED BUT NOT NO OF SPECIMEN	BYCATCH RATE NO OF SPECIMEN PER DAY AT-SEA *NO OF INCIDENTS PER DAYS AT-SEA	REPORTED BYCATCH ESTIMATE BY MS
Baltic Sea	Bird	27.3.c.22	Nets	Anatidae	25.8	55970	1	12	0.47	NA
Baltic Sea	Bird	27.3.d.24	Nets	Melanitta fusca	12.9	87658	1	2	0.16	NA
Baltic Sea	Bird	27.3.d.25	Nets	Gavia arcifca	44	5198	NA	0	0.00	NA
Celtic Seas	Bird	27.7.f	Nets	Phalacrocorax spp.	44	4444	3	3	0.07	NA
Celtic Seas	Bird	27.7.f	Nets	Uria aalge	44	4444	15	15	0.34	NA
Celtic Seas	Bird	27.7.g	Nets	Morus bassanus	29	2772	1	1	0.03	NA
Celtic Seas	Bird	27.7.g	Nets	Uria aalge	29	2772	1	1	0.03	NA
Celtic Seas	Bird	27.7.j	Nets	Morus bassanus	53	1748	2	2	0.04	NA
Greater North Sea	Bird	27.7.e	Nets	Phalacrocorax spp.	122	6796	2	2	0.02	NA
Greater North Sea	Bird	27.7.e	Nets	Uria aalge	122	6796	14	14	0.11	NA
Iceland Sea	Bird	27.5.a	Longlines	Fulmarus glacialis	230	NA	11	11	0.05	NA
Iceland Sea	Bird	27.5.a	Nets	Cepphus grylle	120	NA	6	16	0.13	NA
Iceland Sea	Bird	27.5.a	Nets	Clangula hyemalis	120	NA	1	1	0.01	NA
Iceland Sea	Bird	27.5.a	Nets	Fratercula arctica	120	NA	1	1	0.01	NA
Iceland Sea	Bird	27.5.a	Nets	Fulmarus glacialis	120	NA	9	17	0.14	NA
Iceland Sea	Bird	27.5.a	Nets	Gavia immer	120	NA	2	3	0.03	NA
Iceland Sea	Bird	27.5.a	Nets	Phalacrocorax spp.	120	NA	1	1	0.01	NA
Iceland Sea	Bird	27.5.a	Nets	Somateria mollissima	120	NA	11	34	0.28	NA
Iceland Sea	Bird	27.5.a	Nets	Uria aalge	120	NA	4	13	0.11	NA
Iceland Sea	Bird	27.5.a	Nets	Uria lomvia	120	NA	1	1	0.01	NA

ECOREGION	TAXA	ICES SUBAREA	MÉTIER3	SPECIES	TOTAL OBSERVED EFFORT (DAYS AT-SEA)	FISHING EFFORT (DAYS AT-SEA)	TOTAL No. INCIDENTS	TOTAL NO OF SPECIMENS *INCIDENT REPORTED BUT NOT No OF SPECIMEN	BYCATCH RATE No OF SPECIMEN PER DAY AT-SEA *No OF INCIDENTS PER DAYS AT-SEA	REPORTED BYCATCH ESTIMATE BY MS
Western Mediterranean Sea	Bird	17	Bottom trawls	<i>Phalacrocorax aristotelis</i>	25	812	1	1	0.04	1

Données de France, Allemagne, Danemark et Espagne transmis mais dans un format non utilisable au moment de la rédaction du rapport.

REGION	ICES DIVISIONS	TOTAL MAXIMUM DAS	OBSERVED DAS (2015-2016)	OBSERVER COVERAGE%	OBSERVED No. Dd (2015-2016)
Celtic Sea	7a	730	11	1.51	0
	7b	1012	25	2.47	1
	7c	662	20	3.02	1
	7d	4772	60	1.26	0
	7e	997	69	6.92	0
	7g	607	8	1.32	0
	7h	142	18	12.68	0
	7j	949	46	4.85	3
	7k	665	29	4.36	0
	Total	10536	286	2.71	5
	Bay of Biscay	8a	6320	78	1.23
8b		1654	17	1.03	2
8c		1666	33	1.98	0
8d		1301	41	3.15	0
8e		21	4	19.05	0
Total	10962	173	1.59	23	

WGBYC

- ToR D

Groupe ICES/OSPAR/HELCOM sur les oiseaux: demande de *risk assessment*. Problème des données insuffisantes

