



Réunion : Avancées du projet Life+ Pétrels

Patrick Pinet, Jérôme Dubos, Martin Riethmuller, Christophe Caumes, Yahaia Soulaïmana Mattoir, Camille Payet, Anne Lefeuvre, Patxi Souharce, Sebastien Lefort, Jordan Baszile, Laurence Humeau, Audrey Jaeger, Merlene Saunier, Jade Lopez, Mathieu Saliman, Sarah Caceres & Matthieu Le Corre.



Journée du RESOM, 12 décembre 2019



ENDEMIC PETRELS...

Conservation urgency...

10 000 breeding pairs



EN

Barau's petrel

Pterodroma baraui

50-100 breeding pairs



CR

Mascarene petrel

Pseudobulweria aterrima



NOS PETRELS...

des menaces multiples...



Conservation challenges...



Similar conservation challenges...

URBAN LIGHT...





SEOR

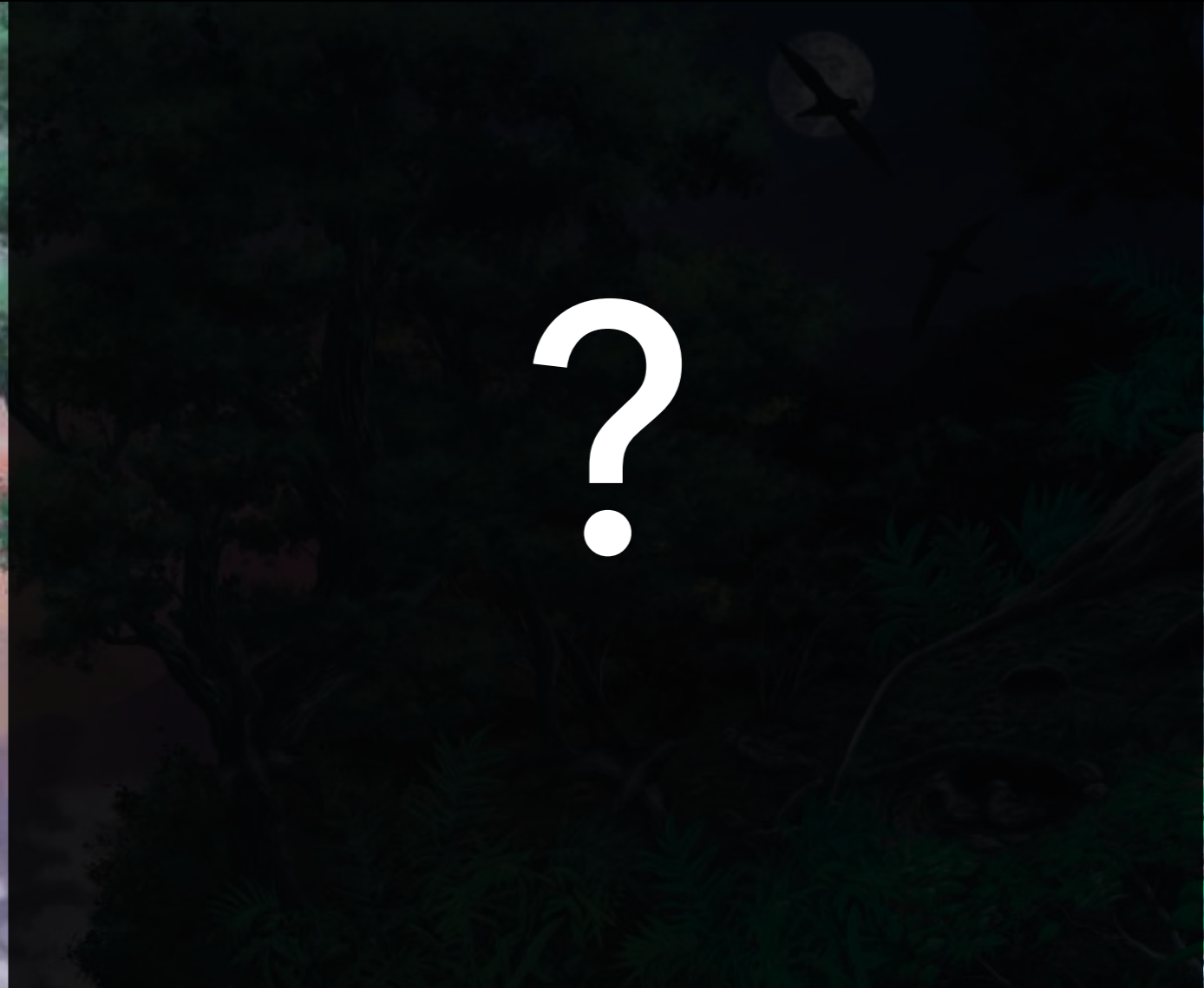


MORE THAN 2500 GROUNDED SEABIRDS EACH YEARS



ENDEMIC PETRELS . . .

Lack of knowledge . . .



EN



CR





Life+ Pétrels

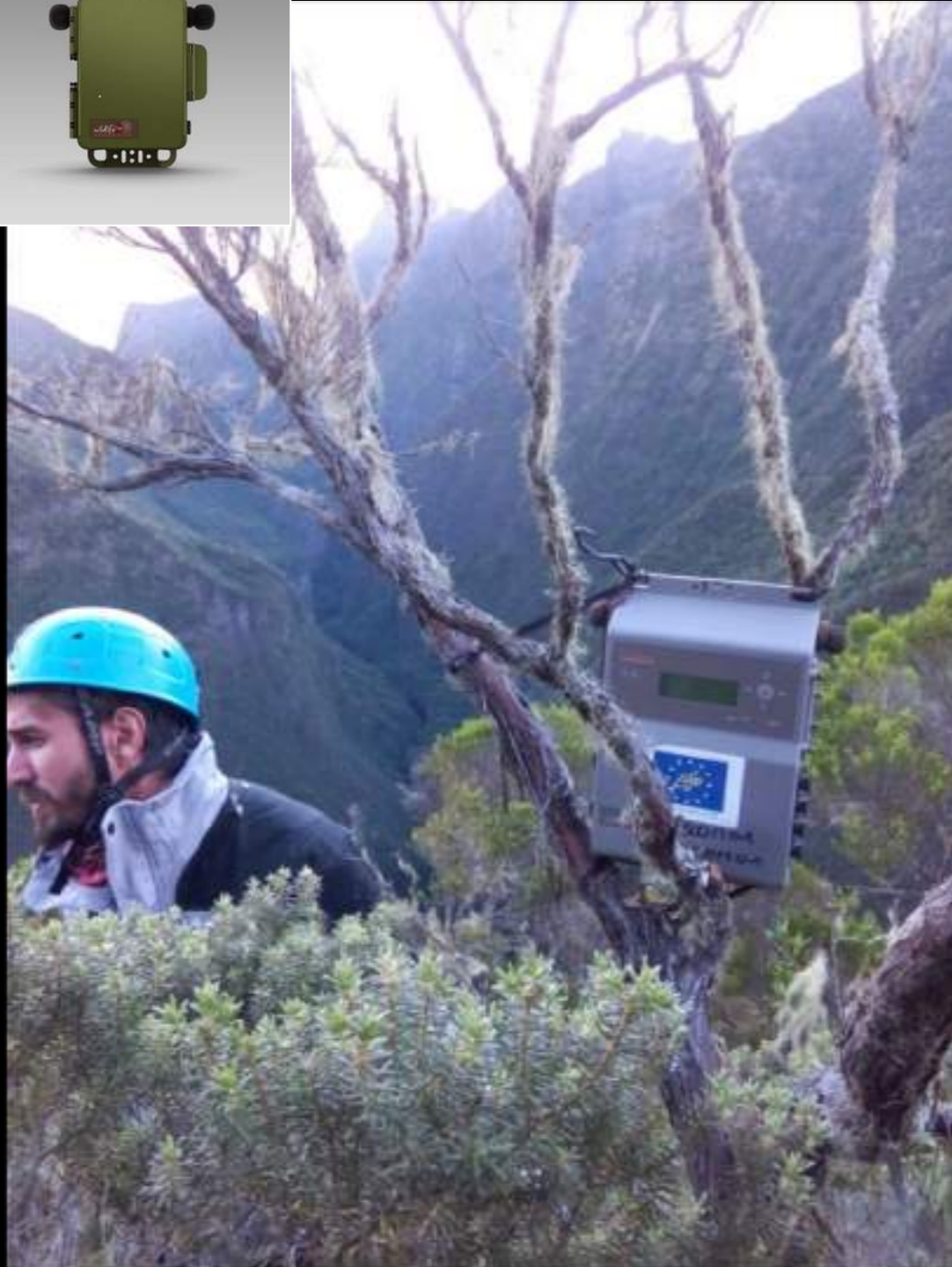
2015-2020



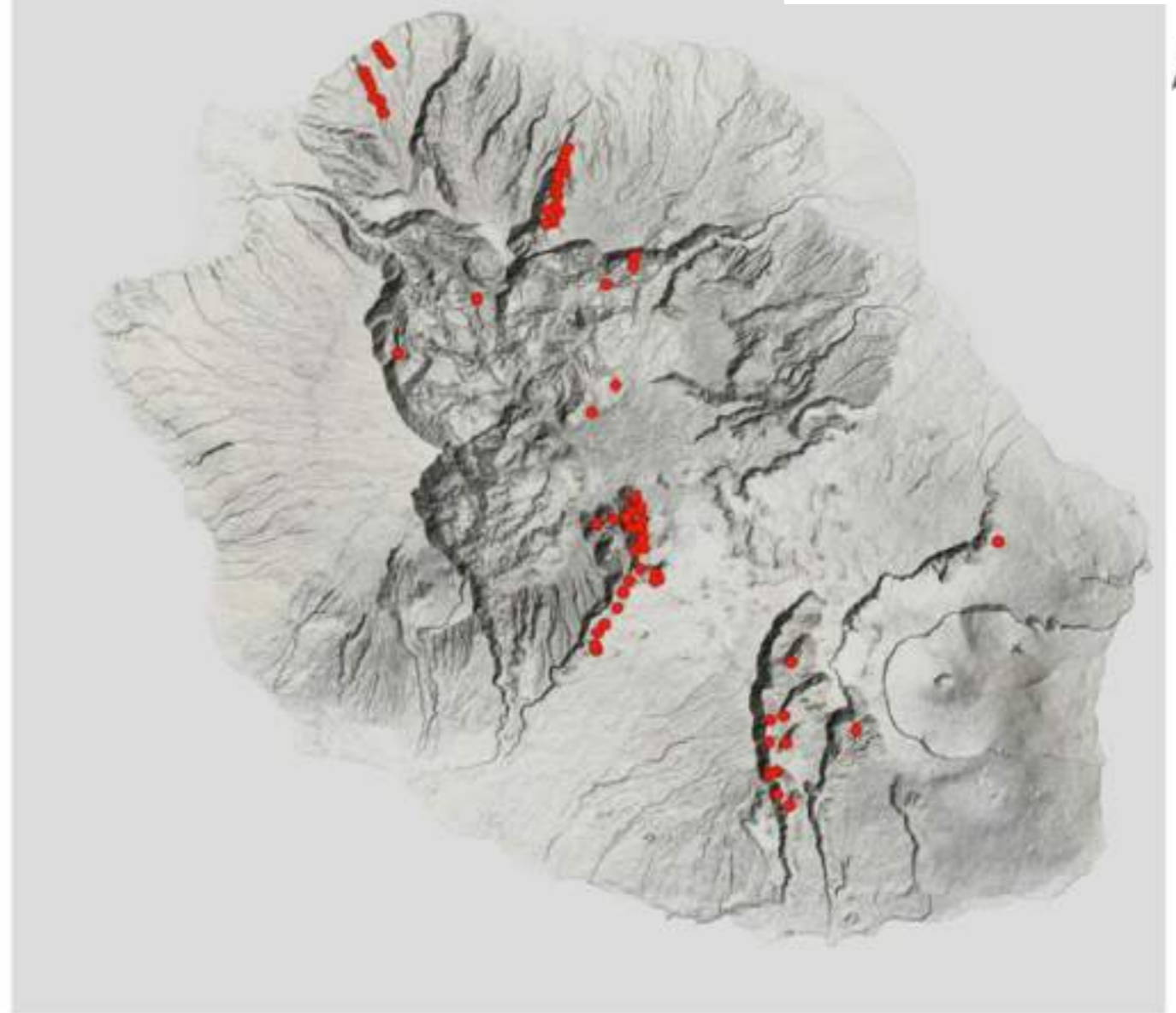
ENDEMIC PETRELS...

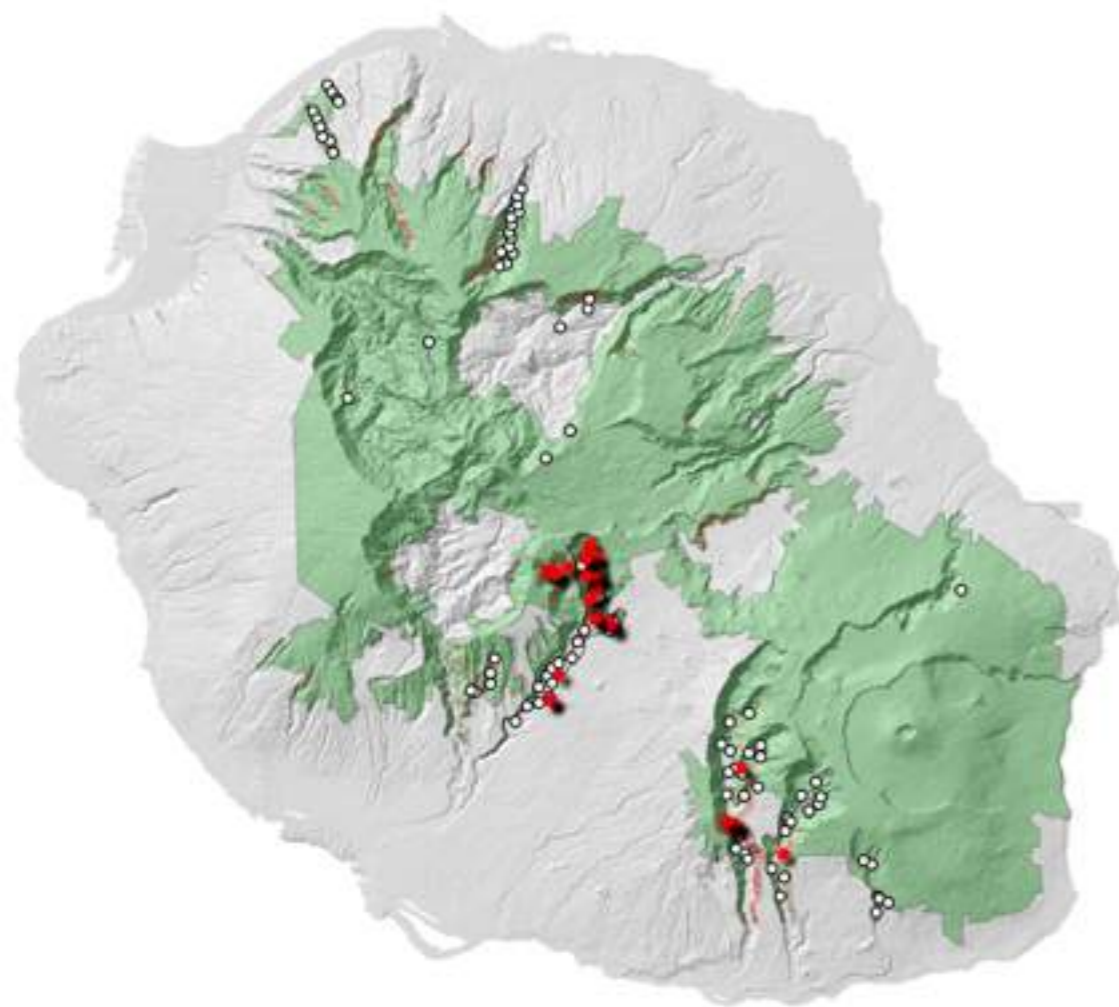
to discover breeding sites...





listen during the night...





- > 124 sites prospectés
- > 25 000 heures enregistrées
- > 120 000 détections de PNB
- > 18 sites chanteurs actifs

2015



see at night...



2015



After one year, first observation at night..



2015.12.08 22:23:58



2015



www.petrels.re



2016

Next breeding season



2016



November 2016... After 160 years of mystery...



2016



2016



2016



2016 BREEDING COLONIE



=> 0% of Breeding success



2016



Identify ground call...



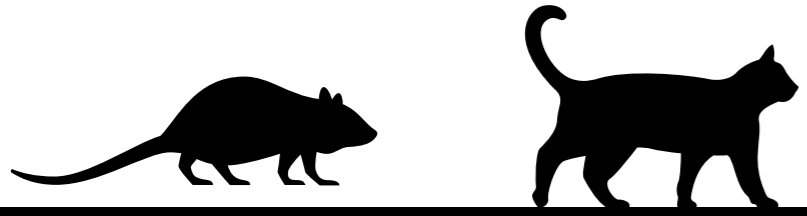
08-06-2018 05:09:00 30Sec





2017 PROTECTING BREEDING SITE



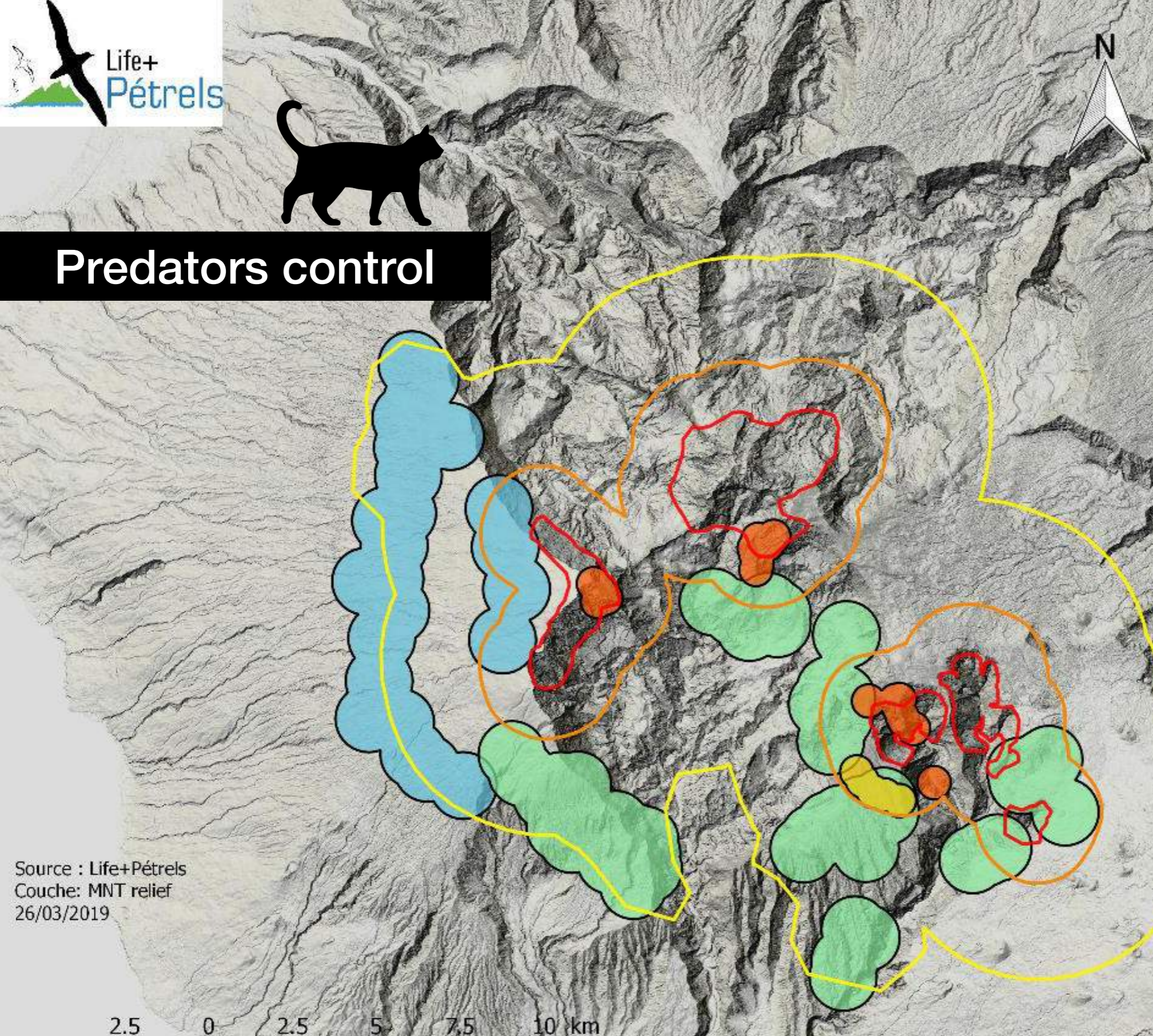


Predators control

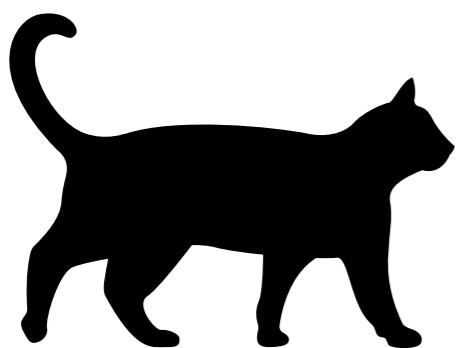




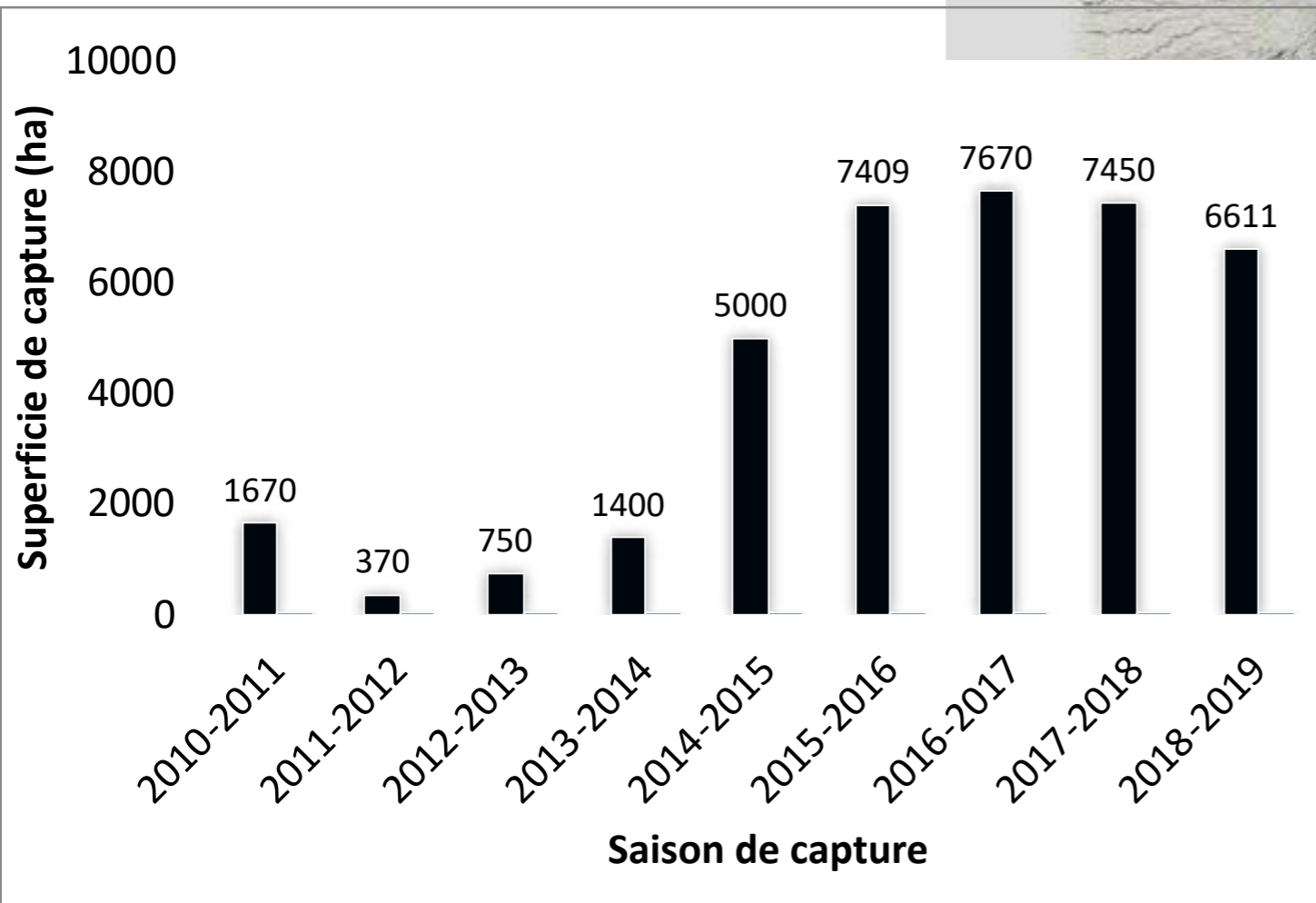
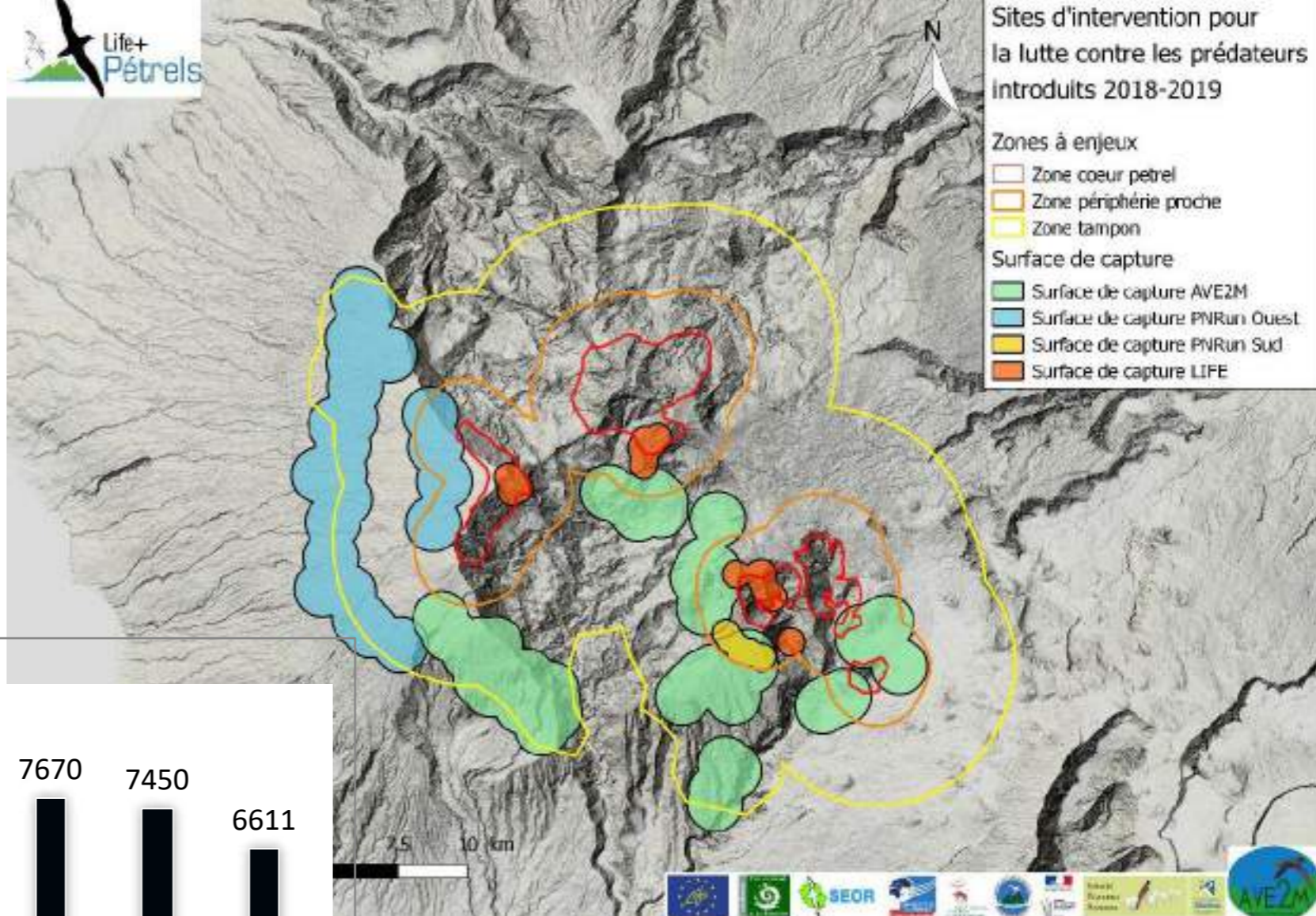
Predators control



Source : Life+Pétrels
Couche: MNT relief
26/03/2019

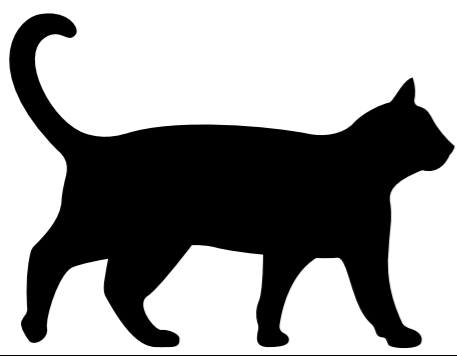


Action de contrôle des prédateurs

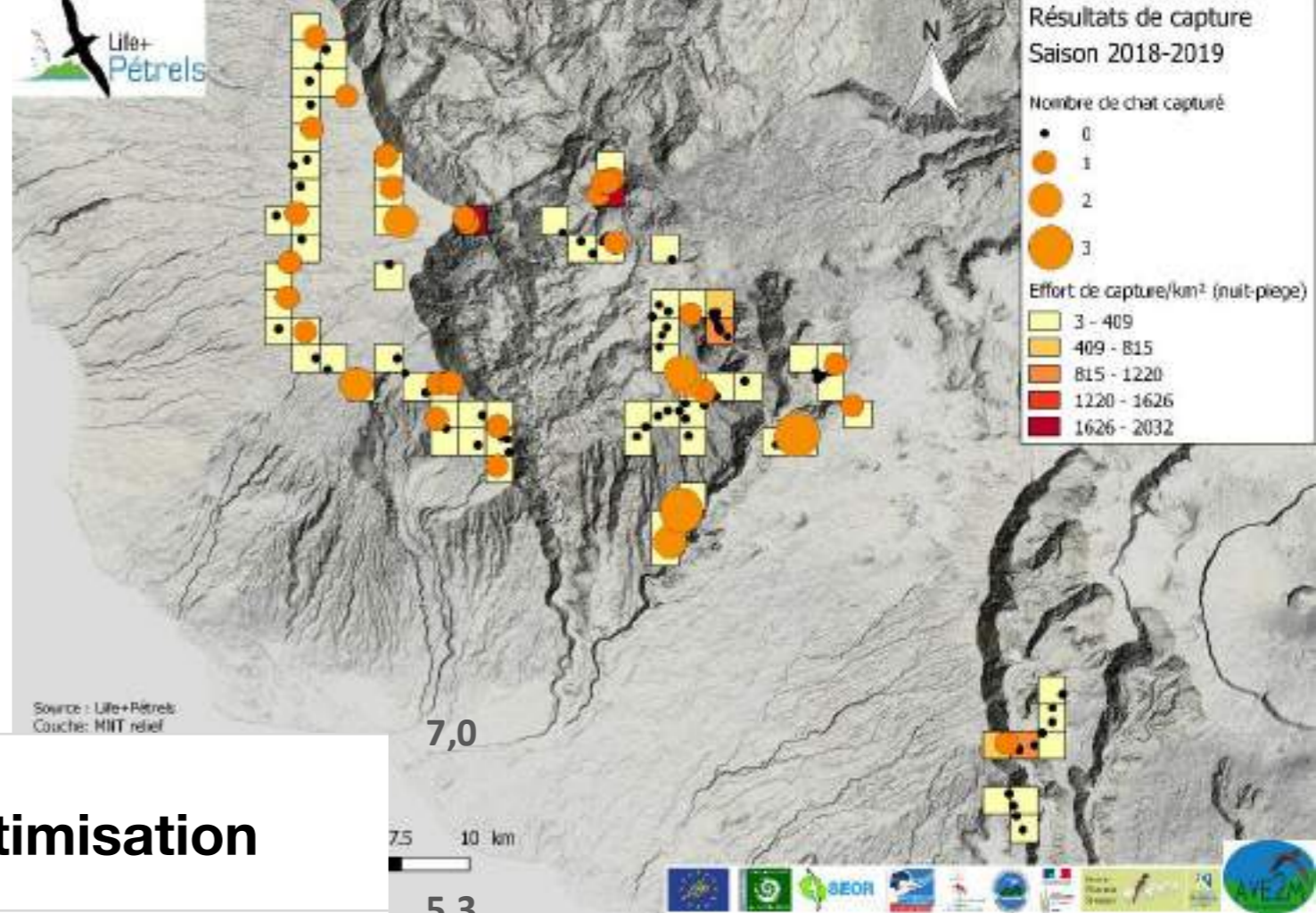


Rappel engagements: contrôle sur 1000ha



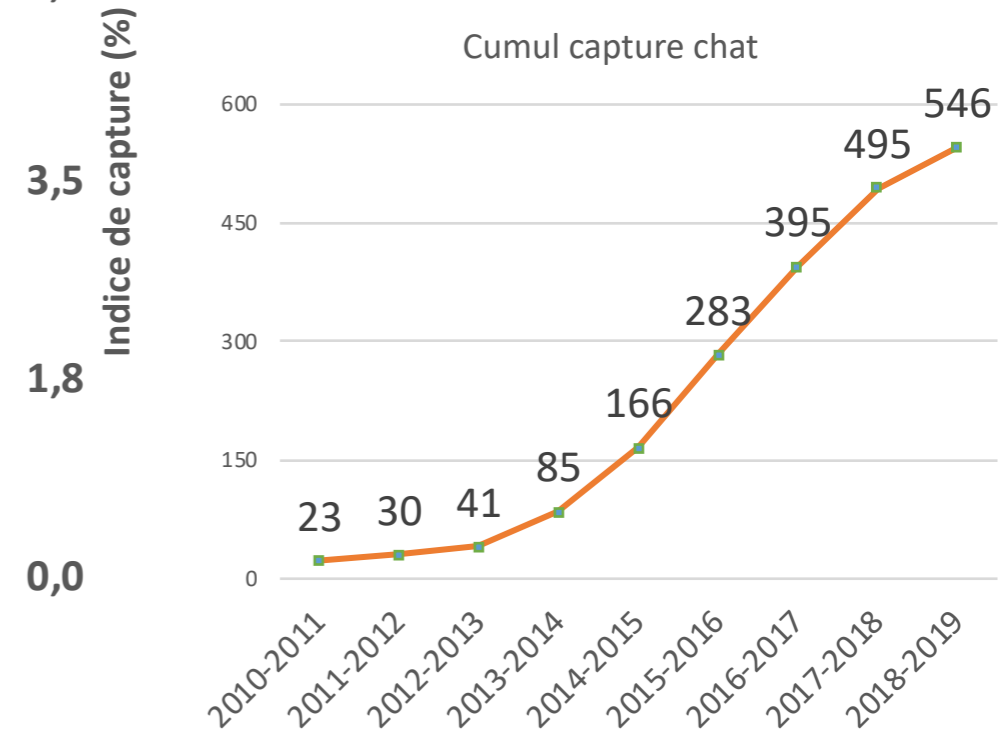
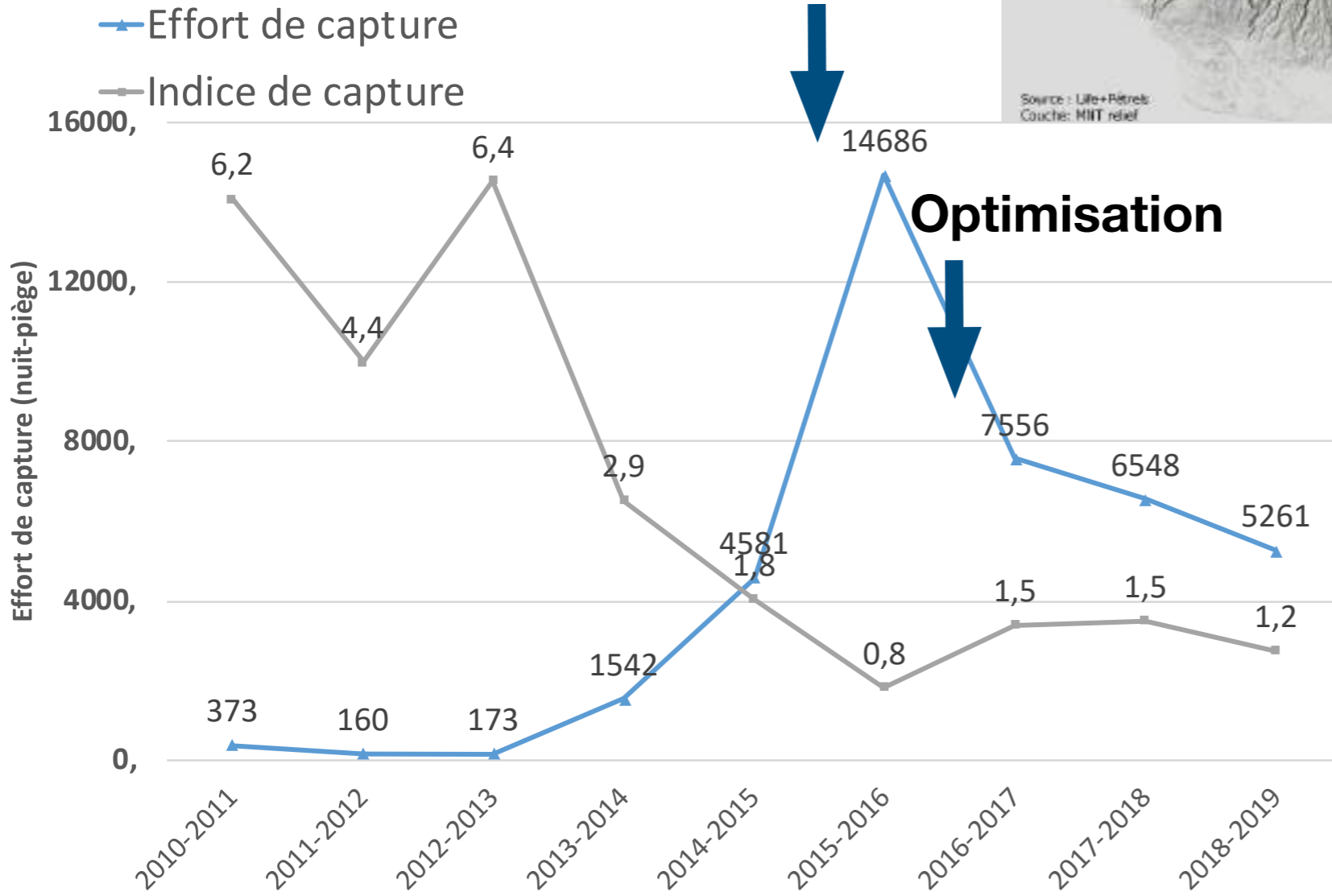


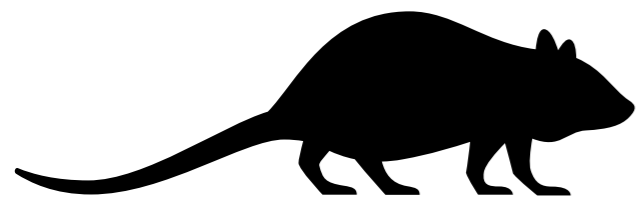
Action de contrôle des prédateurs



Intensification

Optimisation





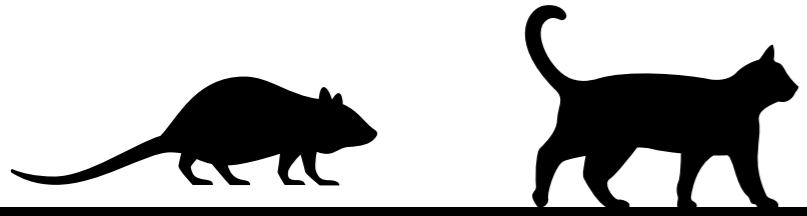
Action de contrôle des prédateurs

Colonie	Surface dératifiée (Ha)	Nombre passage	Nombre de stations de raticide	Masse total consommée (kg)
BDE	1,2	4	85	0,26
GBR	1,6	5	88	2,33
RIR-C1	0,2	6	22	5,26
RIR-CA	0,5	5	15	2,88
RDC	1,0	3	30	2,7
TOTAL	4,5	23	240	13,43

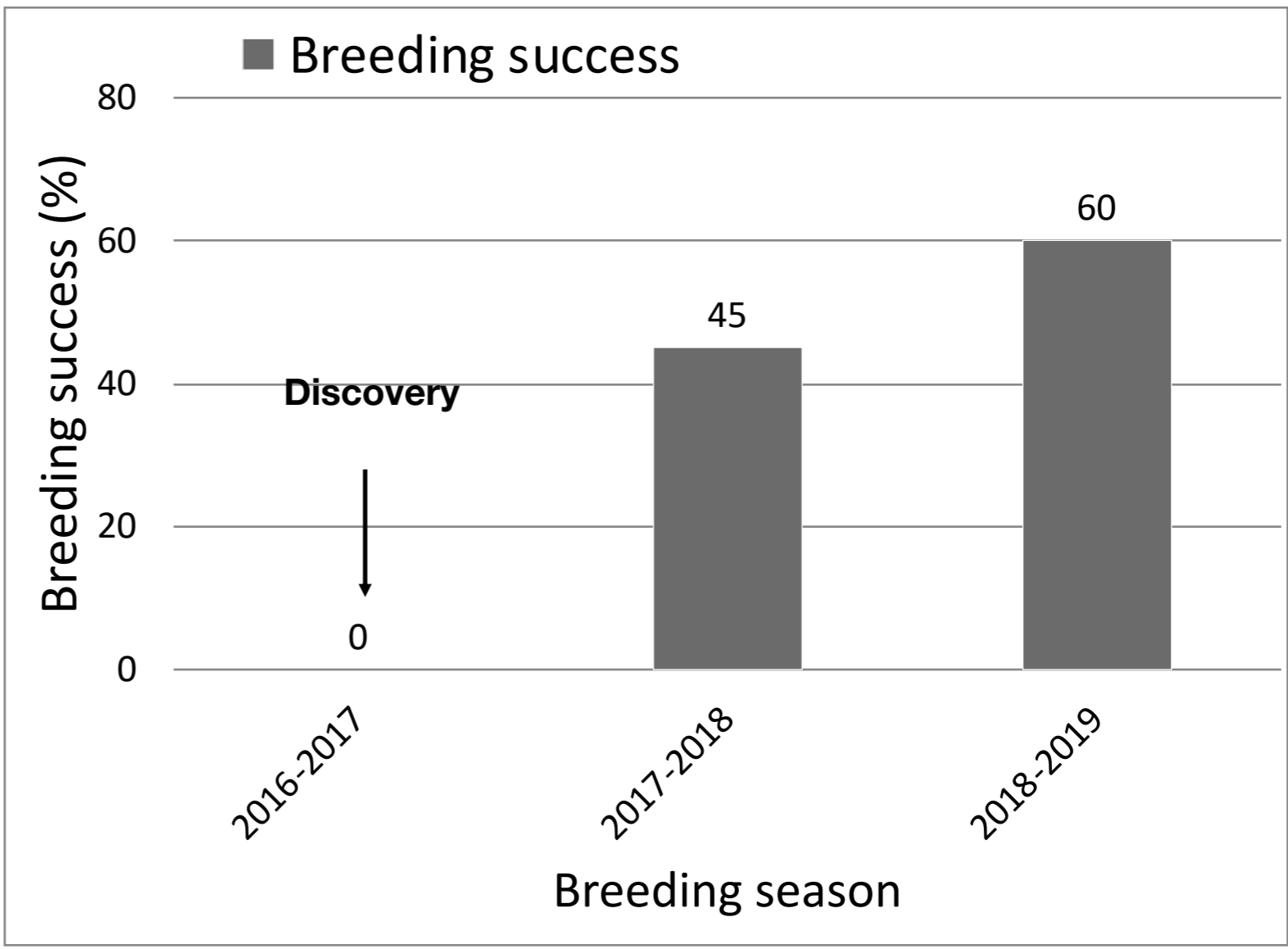
=> 3kg/ha de biocide

=> 150 pièges sur 4 sites

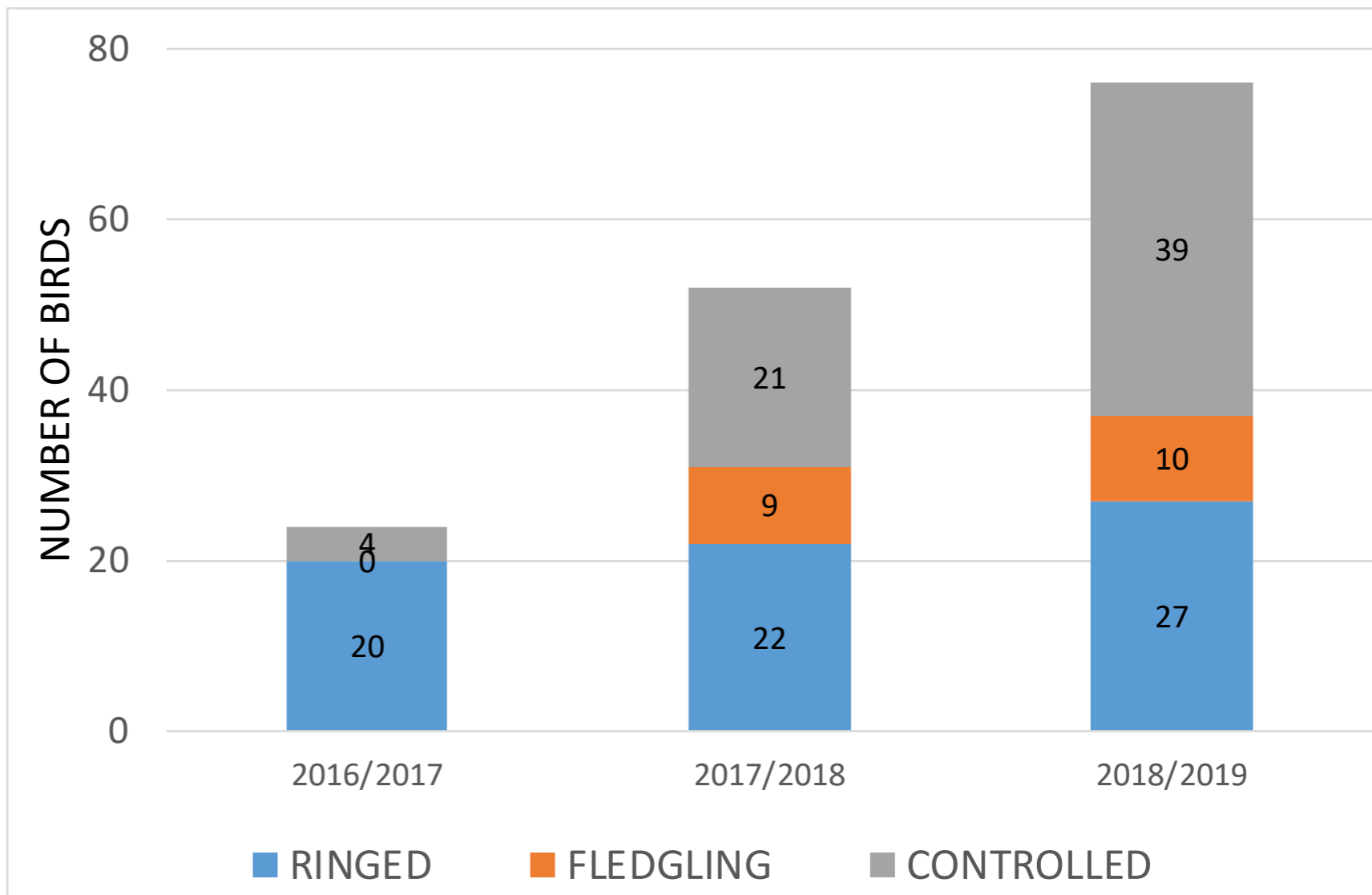




Predators control



MONITORING



2019



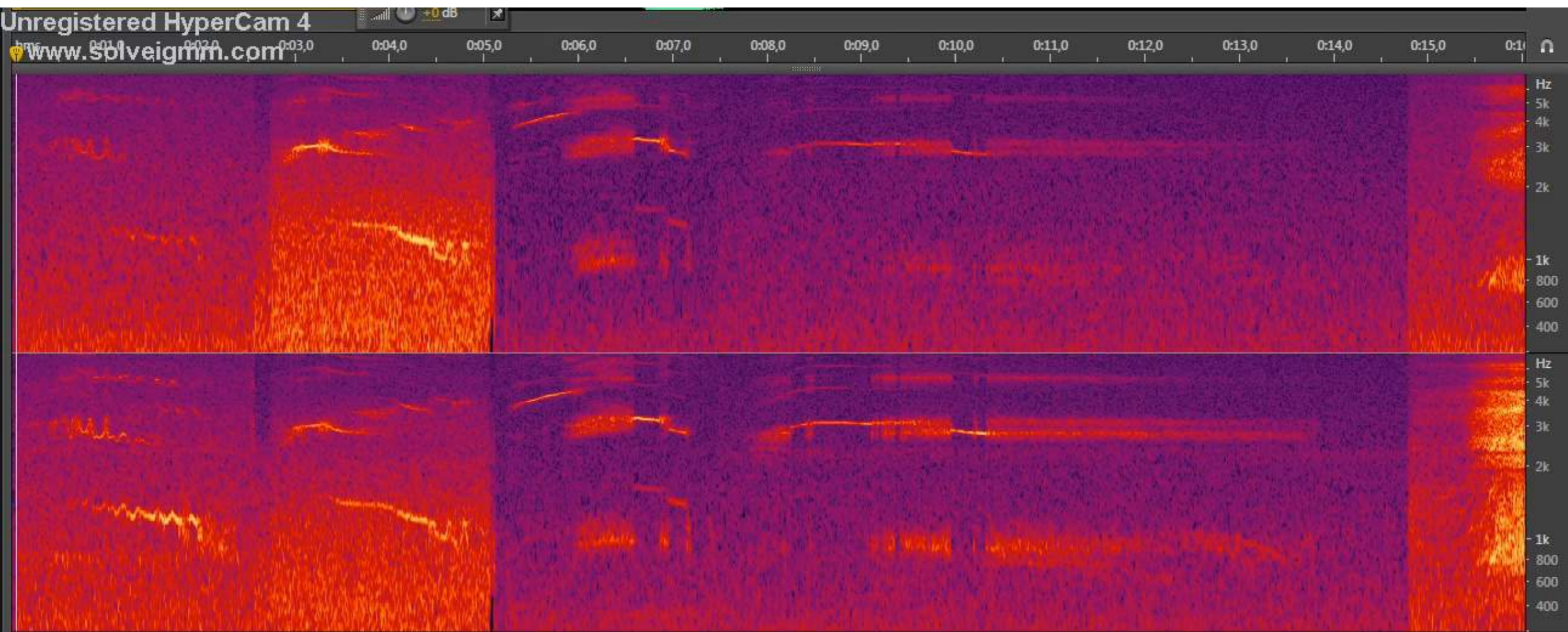
- 2 monitored breeding colonies
- 15 breeding sites identified
- 47 monitored burrows
- 85 ringed Mascarene petrels



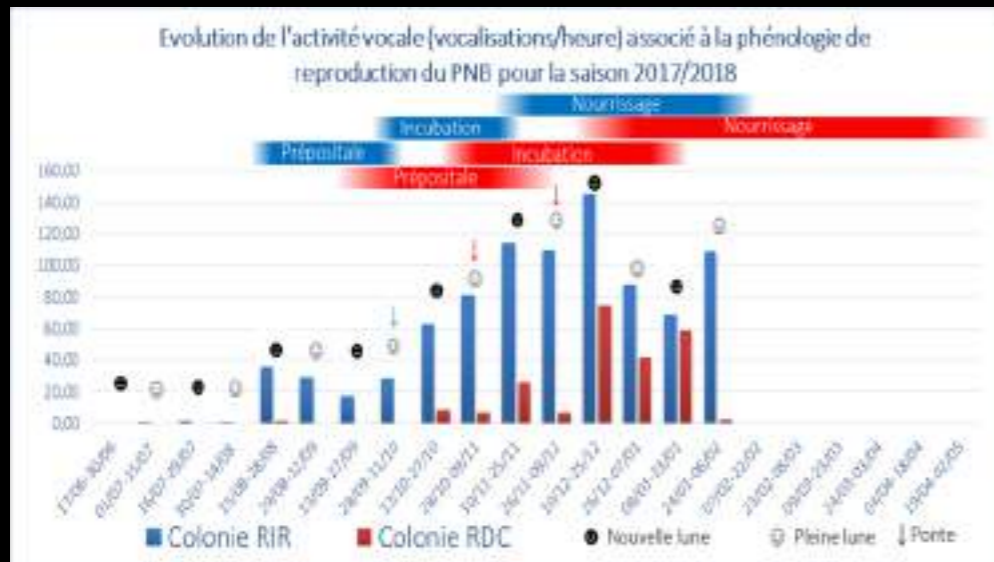
SCIENTIFIC KNOWLEDGE



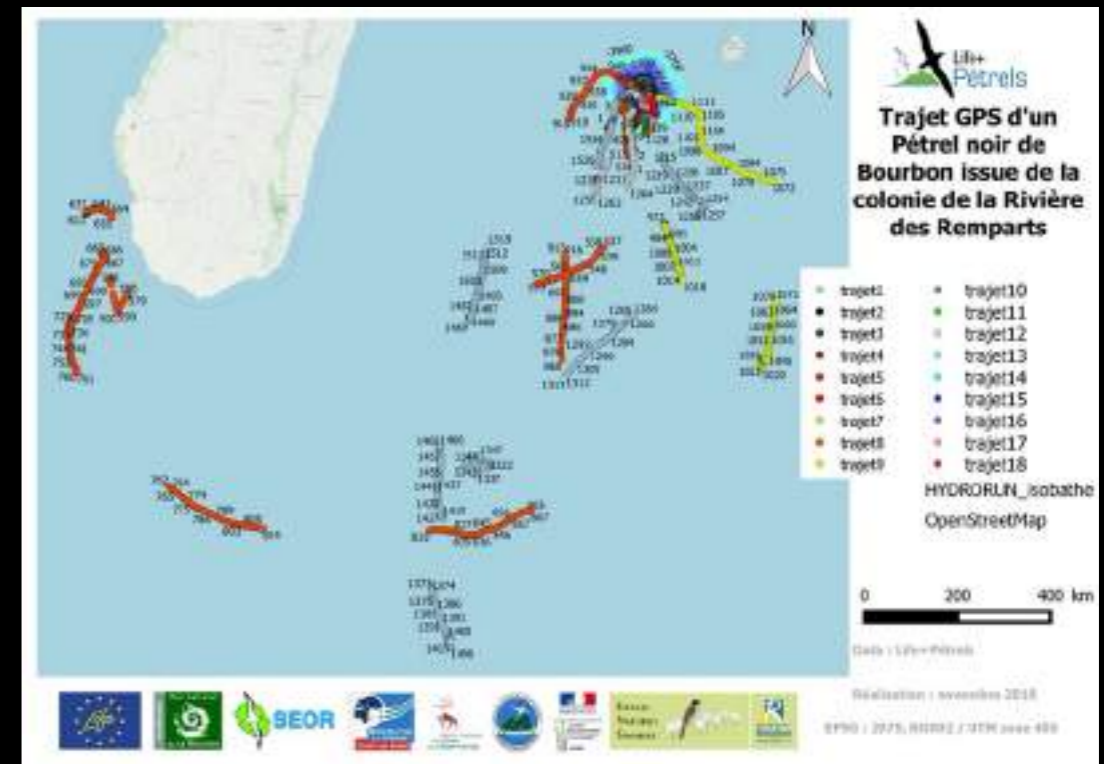
VOCALIZATIONS



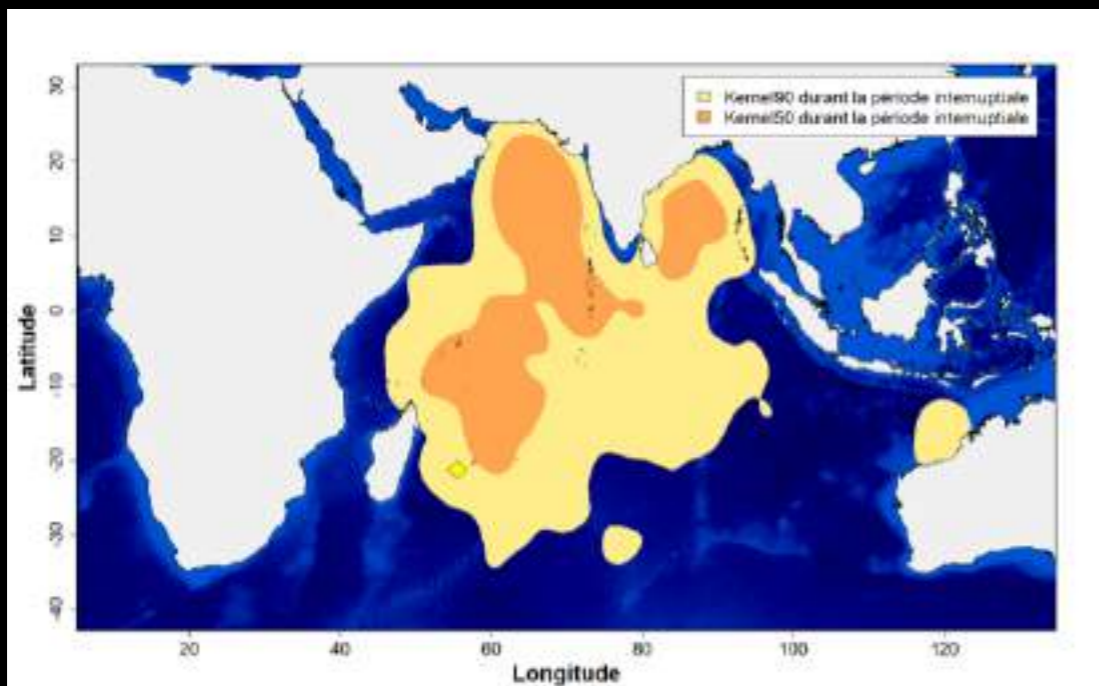
SCIENTIFIC KNOWLEDGE



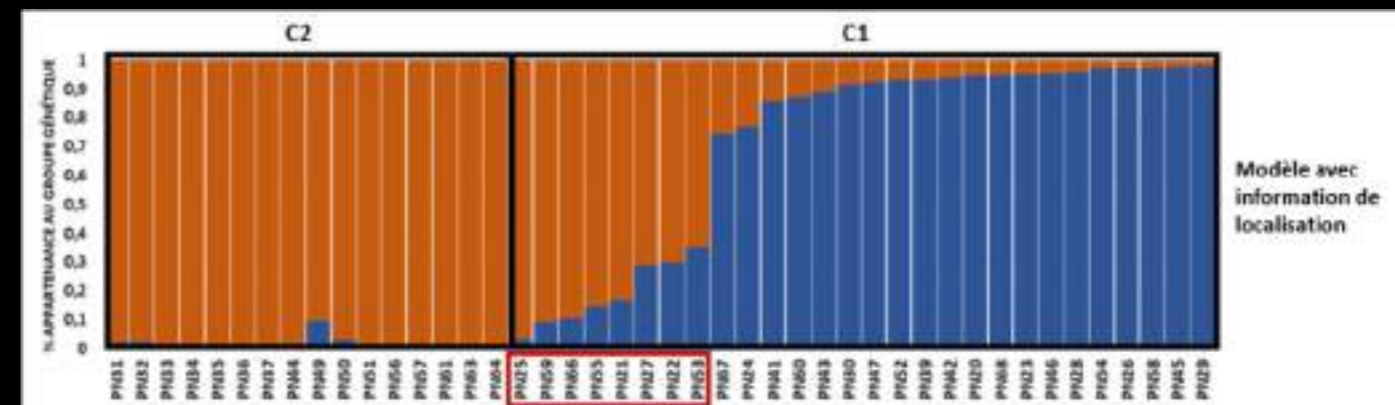
Breeding phenology



Breeding at sea-distribution



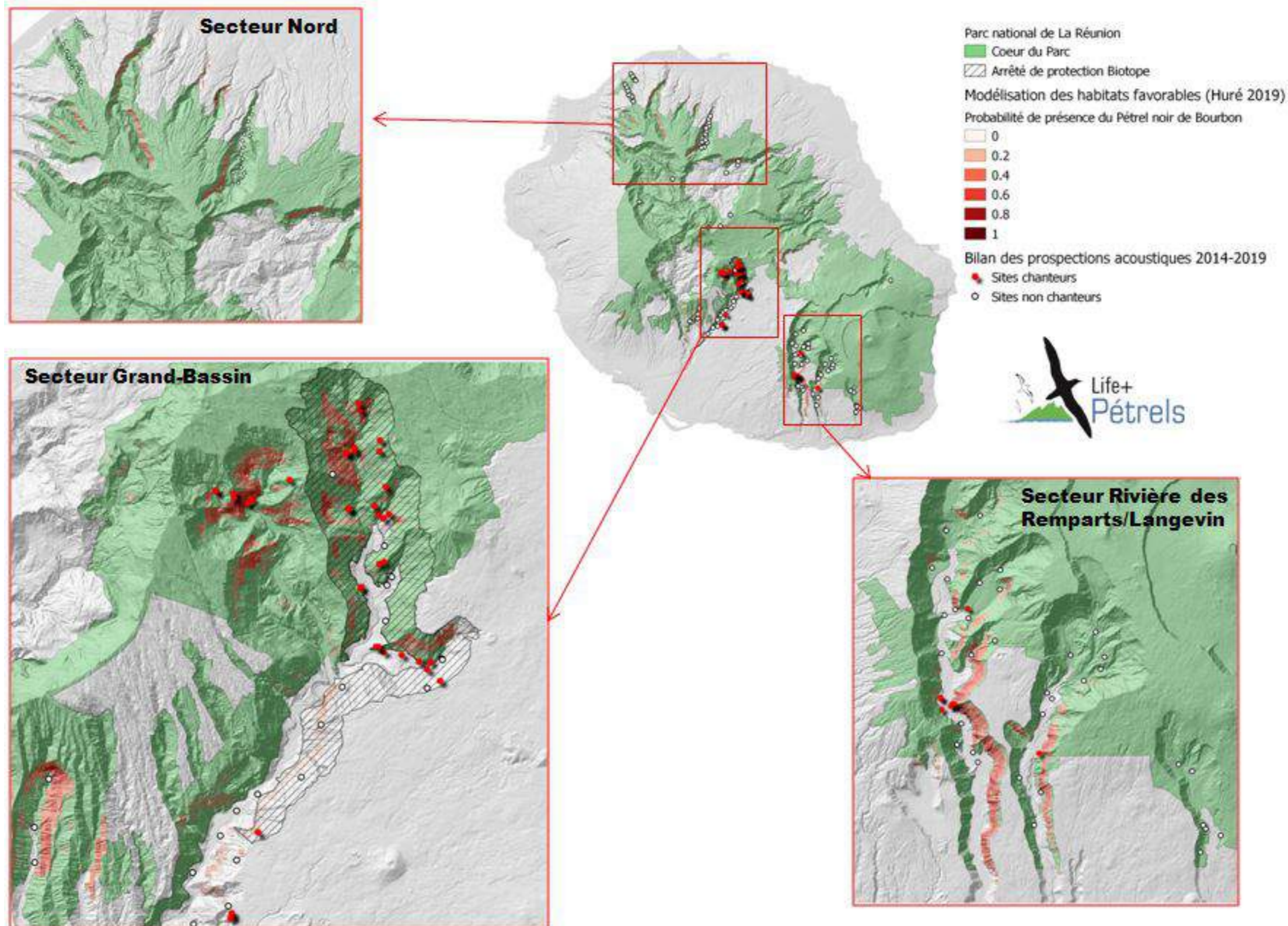
Wintering distribution



Population genetic



Modélisation prédictive de l'habitat du Pétrel noir



ARTIFICIAL BREEDING COLONIES



2018 LONG TERM CONSERVATION



2018 LONG TERM CONSERVATION



2018 LONG TERM CONSERVATION



Office National des Forêts



2018 LONG TERM CONSERVATION




=> just wait and be patient...



2018



M BUSH3

48°F 09°C 

03-11-2018 03:19:21



2018



M BUSH3

50°F 10°C

30-10-2018 03:10:20



2019



2019



FIRST BIRD CONTROLLED

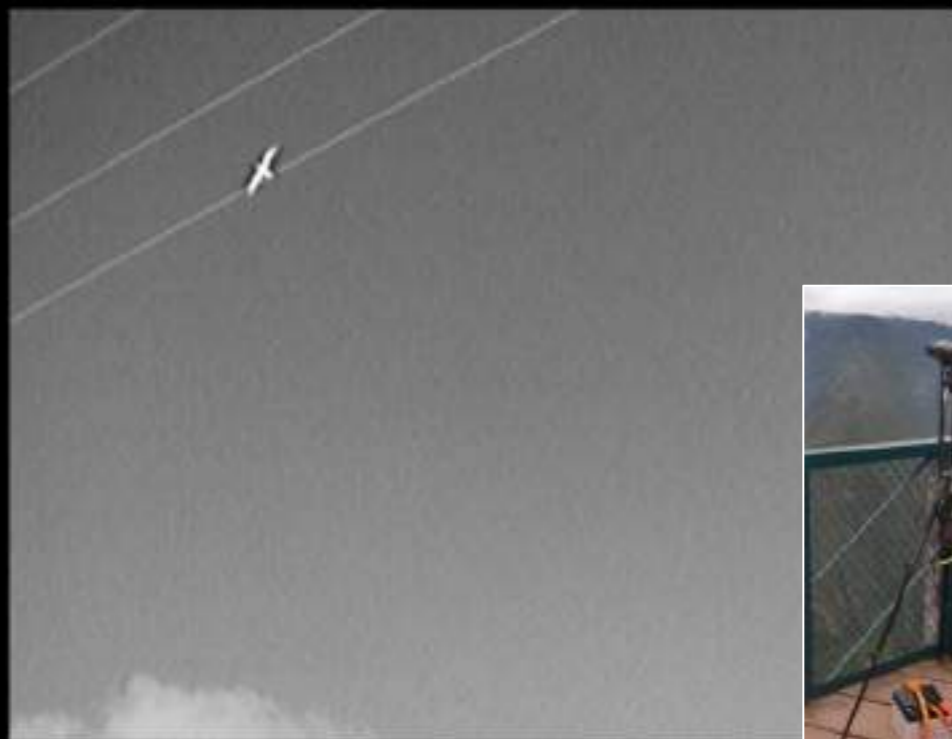
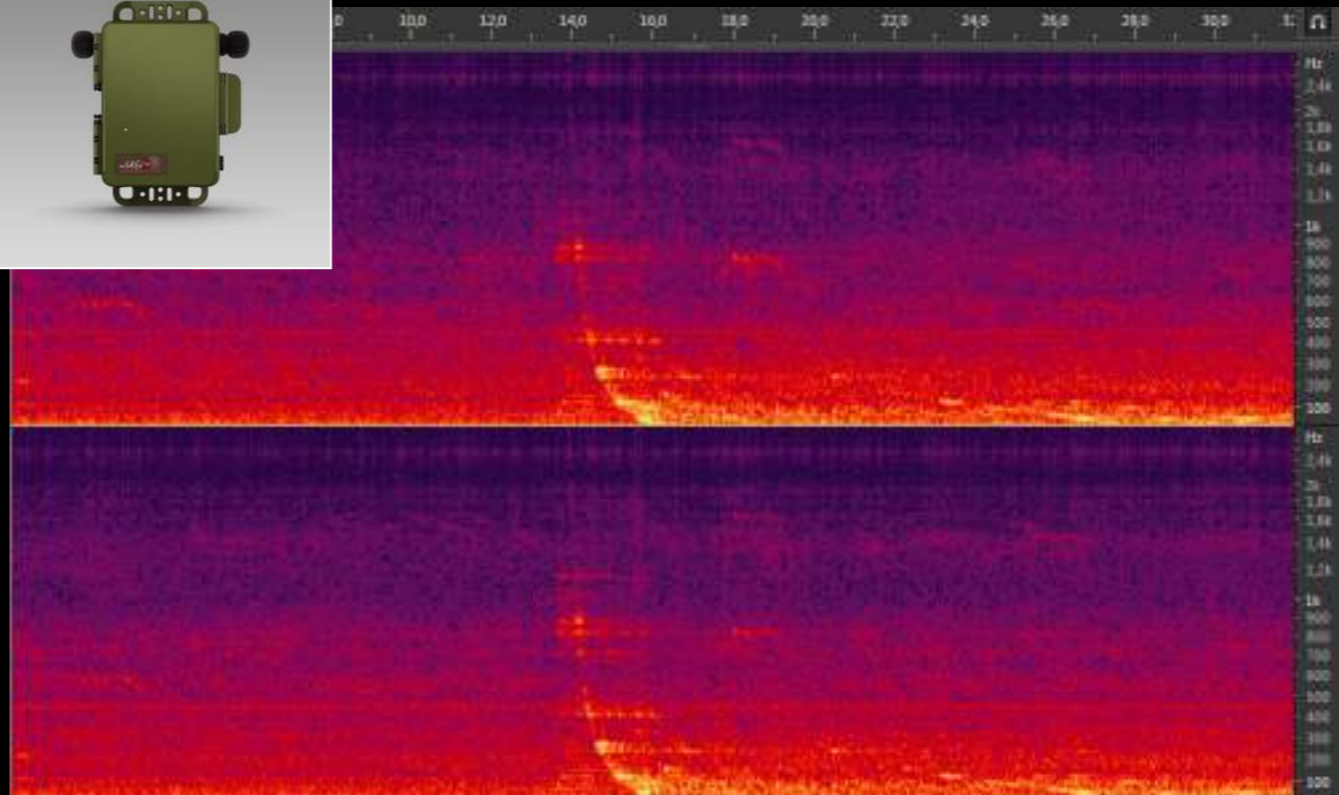


ETUDE EN COURS; IMPACT DES COLLISIONS DE L'AVIFAUNE NOCTURNE AVEC DES CÂBLES



Figure 31. Cadavres de puffins tropicaux retrouvés sous les lignes à la Rivière des Remparts ayant des datations différentes :
a) Frais, b) Récent et c) Vieux.

COLLISIONS AVEC DES CÂBLES



- 223 collisions enregistrées et détectées sur 308 heures sur 3 mois (juillet-octobre)
- 35 cadavres retrouvés sous le câble



FIN DU LIFE+ PÉTRELS EN 2020



JE RECHERCHE UN JOB





Merci de votre attention!!



Projet financé par l'Europe



Projet LIFE+ Pétrels

Christ Photo : Parc national de La Réunion / Benoît L.

www.petrels.re

